

Terminals

Available inside the framework through nickeled brass PG9 on a terminal board

Mechanical characteristics

IP20, Cemented wirewound resistor in galvanized steel enclosure

Applications

Dynamic braking, Starting motor

Market

Industrial automation

Special version

Framework AISI304, Three-phase, Multiple sections

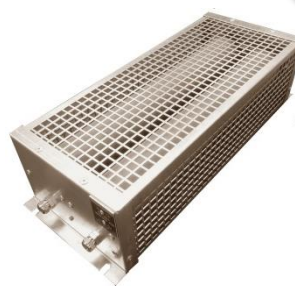
Options

Thermal switch

RM



900 ÷ 1800 W



ELECTRICAL CHARACTERISTICS

refers to room temperature 25°C

ID	Rated Power	Min Resistance	Max Resistance
Unit	W	Ω	Ω
RM 01M	900	0.82	91
RM 01L	1200	1.1	120
RM 02M	1800	0.43	180

Continuous rated power refers to external surface temperature of 320°C	Insulation resistance (1000 VDC) ≥1000 MΩ
Max Overload 5 x Rated power for 10" or 10 x Rated power for 5"	Dielectric strength (50Hz 60") 3000 V – Limit voltage 700 V
<p>Temp. Coefficient Resistance: low ohmic value are made with active material CuNi44 that has a TCR of 40 ppm/°C, whereas high ohmic value refers to wire material FeCrAl that has a TCR of 70 ppm/°C. Resistors can be made also with NiCr alloys with TCR between 70 and 240 ppm/°C.</p> <p>RM internal elements are typically cemented wire wound or tape wound resistor like RCA or RCPO.</p> <p>Standard model housing is galvanized steel.</p> <p>Picture above refers to RM 02L.</p> <p>Standard tolerance on ohmic value is ±5%.</p>	

www.fairfield.com - info@fairfield.com

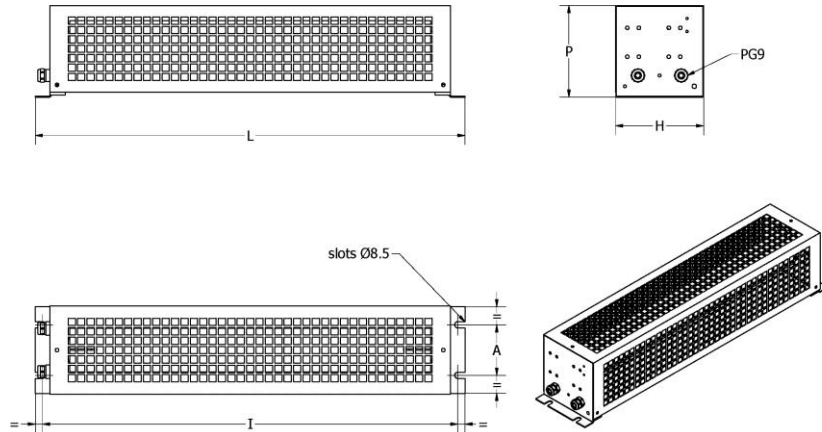
Phone +39 02 48407171 - Fax +39 02 48407157

MECHANICAL DATA

ID	A [mm]	l [mm]	H [mm]	L [mm]	P [mm]	Weight [kg]
RM 01M	70	475	120	495	126	2.3
RM 01L	70	575	120	595	126	2.9
RM 02M	140	475	190	495	126	4.9

Unless otherwise specified, applicable standard of general tolerances for linear and angular dimensions is ISO 2768-1 class c.

DRAWING



www.fairfild.com - info@fairfild.com

Phone +39 02 48407171 - Fax +39 02 48407157

Marking

The resistor is marked on a name plate screwed on front panel
FAIRFILD – RM 01M 900W 15R 5% WW/YY (week / year)

Installation

Unit is designed to be mounted in horizontal position. Different mounting position may decrease the heat exchange.
Warning: never mount unit with the terminal uppermost.

Packing

The resistor is packed in a way to preserve incidental damages due to transport.

Disclaimer

Every effort has been made to ensure that the information in this datasheet is accurate. Fairfild is not responsible for printing or clerical errors. All properties and characteristics mentioned in this datasheet are only for informational purposes. The information in this datasheet is offered solely for your consideration and should not be taken as a warranty or representation for which we assume legal responsibility. The customer bears all responsibility for use and application of Fairfild products. There is no responsibility of the manufacturer for any damage to persons and properties in case of improper use. Fairfild reserves the right to change specifications without prior notice.

Copyright

This datasheet is subject to copyright. Fairfild reserves all rights of translation in any language, reprinting, re-use of illustrations. No part of this publication may be reproduced or transmitted in any form or by any means, electronic, mechanical, photocopying, without the written permission of the copyrighted owner Fairfild, Italy. Violations may be subject to legal proceedings involving monetary damages as well as compensation for costs and legal fees under Italian copyright law and regulation within the European Union.

Ordering information

RM/Y XXX WWW RRRR 5%
Y T : External thermal switch 160±5°C (rated voltage: 250 V; rated current: 16 A; leads available in clip)

- XXX Model 01M, 01L, 02M
- WWW Wattage 900W, 1200W, 1800 W
- RRRR Resistance value (nominal at 20°C)

Example
RM 01M 900W 15R 5%
RM is the name of the product
01M is the model
900 W is the wattage
15R means 15 Ω that is the nominal ohmic value at 20°C

5% is the tolerance on the ohmic value, in this case the value of the resistor is accepted when is within 14.25 Ω ÷ 15.75 Ω