



MAIN FEATURES

Description	Wire wound resistor on elliptical ceramic support coated with vitreous enamel (RSE) or cement (RCE)
Market	Industrial Automation, Railway traction, Energy conversion
Applications	Dynamic braking, Harmonic filters, Charge Discharge Capacitors, Heating resistor
Mechanical characteristics	Protection Degree IP00, Two terminals, Flat shape
Special version	Not-inductive, Adjustable, Intermediate grip, Special terminals, Traction version, Special tolerance
Active materials	Available: Nickel-Chrome Alloys, CuNi44

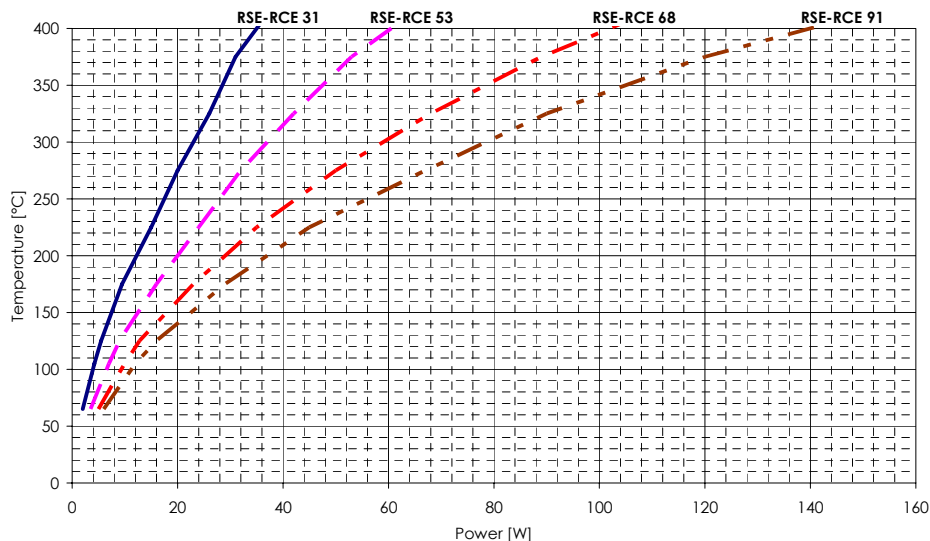
Parameter	Condition	ID	Unit	Value
Nominal power	T _a =25°C	P _{nom}	W	see table
Min resistance	T _a =25°C	R _{min}	Ω	see table
Max resistance	T _a =25°C	R _{max}	Ω	see table
Max res. adjustable version		R _{adj}	Ω	see table
Min res. not-inductive version		R _{ind}	Ω	see table
Critical resistance		R _{crit}	Ω	see table
Max resistance for traction		R _{trac}	Ω	see table
Limit voltage		V _{lim}	V	see table
Surface resistor temp.	T _a =25°C	T _{nom}	°C	see graph
Resistance tolerance	T _a =25°C		%	±5
Temp. Coefficient Resistance		TCR	10 ⁻⁶ /°C	20±170
Dielectric strenght	50Hz; 60"	V _{iso}	V _{rms}	1.000
Insulation resistance	500 VDC	R _{iso}	MΩ	≥100
Max Overload	10"	P ₁₀	W	5xP _{nom}
	5"	P ₅	W	10xP _{nom}

ELECTRICAL CHARACTERISTICS

ID Unit	P _{nom} W	R _{min} Ω	R _{max} Ω	R _{adj} Ω	R _{ind} Ω	R _{crit} Ω	R _{trac} Ω	V _{lim} V
RCE 31	31	1,5	9k1	3k9	6	16k	3k	700
RCE 53	53	2,7	18k	9k1	10,8	19k	6k8	1.000
RCE 68	68	3,9	33k	12k	15,6	33k	10k	1.500
RCE 91	91	4,7	43k	18k	18,8	25k	12k	1.500

ID Unit	P _{nom} W	R _{min} Ω	R _{max} Ω	R _{adj} Ω	R _{ind} Ω	R _{crit} Ω	R _{trac} Ω	V _{lim} V
RSE 31	31	1,5	12k	4k7	6	16k	3k9	700
RSE 53	53	2,7	22k	12k	10,8	19k	8k2	1.000
RSE 68	68	3,9	39k	15k	15,6	33k	13k	1.500
RSE 91	91	4,7	56k	22k	18,8	25k	15k	1.500

Surface Temperature Characteristics

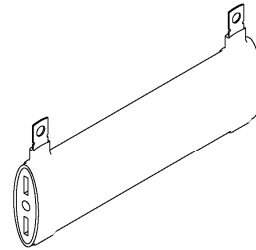
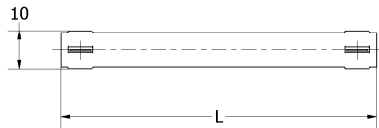
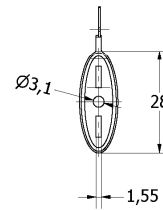
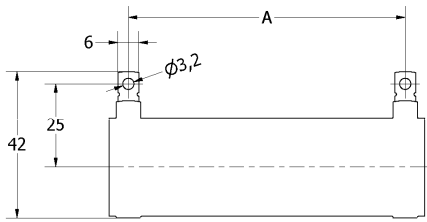




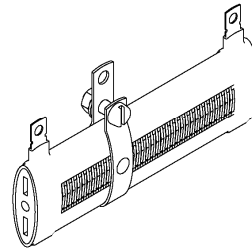
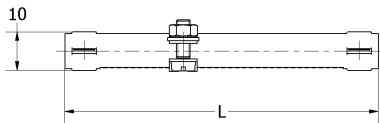
MECHANICAL DATA

Dimensions [mm]	A	L	BRACKETS	Weight [gr]
RCE/RSE 31	40	51	SP1; SP3; SPD	23
RCE/RSE 53	79	90	SP1; SP3; SPD	47
RCE/RSE 68	109	120	SP1; SP3; SPD	62
RCE/RSE 91	142	153	SP1; SP3; SPD	84

DRAWING



ADJUSTABLE VERSION



INTERMEDIATE GRIP

