

DATASHEET REV 0510

MAIN FEATURES

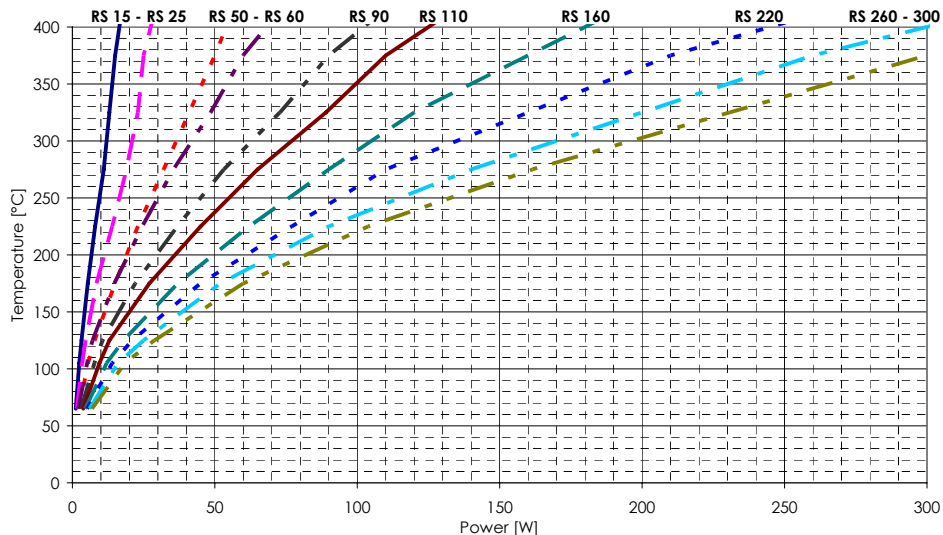
Description	Wire wound resistor on tubular ceramic support coated with vitreous enamel (RS) or cement (RC)
Market	Industrial Automation, Railway traction, Energy conversion
Applications	Dynamic braking, Harmonic filters, Neutral grounding, Charge Discharge Capacitors, Heating resistor
Mechanical characteristics	Protection Degree IP00, Two terminals, Cylindrical shape
Special version	Not-inductive, Adjustable, Intermediate grip, Special terminals, Traction version, Special tolerance
Active materials	Available: Nickel-Chrome Alloys, CuNi44

Parameter	Condition	ID	Unit	Value
Nominal power	T _a =25°C	P _{nom}	W	see table
Min resistance	T _a =25°C	R _{min}	Ω	see table
Max resistance	T _a =25°C	R _{max}	Ω	see table
Max res. adjustable version		R _{adj}	Ω	see table
Min res. not-inductive version		R _{ind}	Ω	see table
Critical resistance		R _{crit}	Ω	see table
Max resistance for traction		R _{trac}	Ω	see table
Limit voltage		V _{lim}	V	see table
Surface resistor temp.	T _a =25°C	T _{nom}	°C	see graph
Resistance tolerance	T _a =25°C		%	±5
Temp. Coefficient Resistance	VITREOUS ENAMEL	TCR	10 ⁻⁶ /°C	20÷170
Temp. Coefficient Resistance	CEMENT	TCR	10 ⁻⁶ /°C	20÷240
Dielectric strenght	50Hz; 60"	V _{iso}	V _{rms}	1.000
Insulation resistance	1.000 VDC	R _{iso}	MΩ	> 100
Max Overload	10"	P ₁₀	W	5xP _{nom}
	5"	P ₅	W	10xP _{nom}

ELECTRICAL CHARACTERISTICS

ID	P _{nom}	R _{min}	RC R _{max}	RS R _{max}	RC R _{adj}	RS R _{adj}	R _{ind}	R _{crit}	R _{trac}	V _{lim}
Unit	W	Ω	Ω	Ω	Ω	Ω	Ω	Ω	Ω	V
RS-RC 15	15	2,2	17k6	22k	N/A	N/A	8,8	17k	1k5	500
RS-RC 25	25	2,2	37k6	47k	3k12	3k9	8,8	20k	4k3	700
RS-RC 50	50	2,2	44k8	56k	4k48	5k6	8,8	20k	7k5	1.000
RS-RC 60	60	2,2	54k4	68k	6k56	8k2	8,8	24k	9k1	1.200
RS-RC 90	90	2,2	54k4	68k	8k	10k	8,8	25k	15k	1.500
RS-RC 110	110	2,2	80k	100k	12k	15k	8,8	30k	20k	1.800
RS-RC 160	160	3,3	80k	100k	14k4	18k	13,2	39k	30k	2.500
RS-RC 220	220	5,6	120k	150k	17k6	22k	22,4	40k	51k	3.000
RS-RC 260	260	10	144k	180k	21k6	27k	40	62k	56k	4.000
RS-RC 300	300	12	176k	220k	26k4	33k	48	68k	68k	4.000

Surface Temperature Characteristics

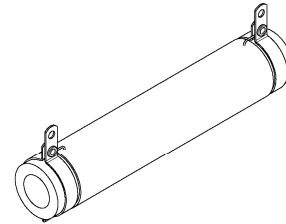
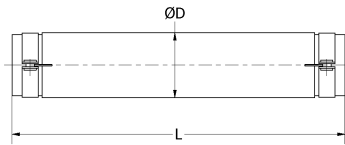
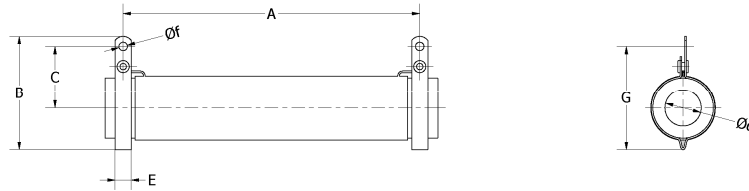




MECHANICAL DATA TC TERMINALS

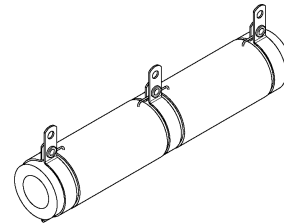
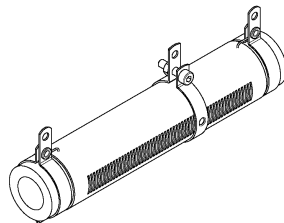
Dimensions [mm]	A	B	C	D	L	d	f	E	G	Weight [gr]
RC-RS 15	36	28,5	16,5	12	45	4,5	3,2	6	25	13
RC-RS 25	55	35	18	15	64	7	3,2	6	31,5	20
RC-RS 50	80	38,5	23	18,35	90	9,5	3,2	6	35	45
RC-RS 60	82	45	26	22,5	100	9,5	4,2	8	41	75
RC-RS 90	109	48	28	26	130	13	4,2	8	44	115
RC-RS 110	147	45	26	22,5	165	9,5	4,2	8	41	135
RC-RS 160	147	55	31	33	165	18	4,2	8	51	210
RC-RS 220	202	55	31	33	220	18	4,2	8	51	260
RC-RS 260	247	55	31	33	265	18	4,2	8	51	360
RC-RS 300	284	55	31	33	300	18	4,2	8	51	410

DRAWING (RS-RC TC TERMINALS)



ADJUSTABLE VERSION (RSR-RCR TC)

INTERMEDIATE GRIP (RSP-RCP TC)



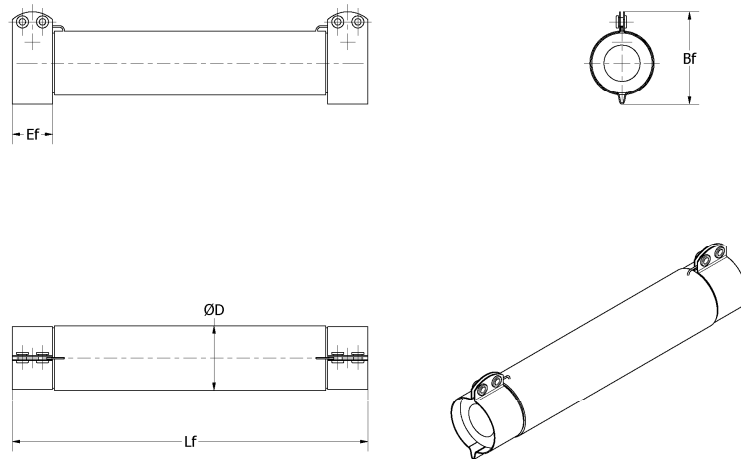


DATASHEET REV 0510

MECHANICAL DATA TF TERMINALS

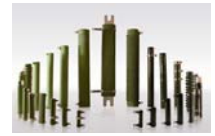
Dimensions [mm]	Lf	Bf	D	Ef	Weight [gr]
RC-RS 15	54	23	12	12	13
RC-RS 25	75	26	15	12	20
RC-RS 50	100	31	18,35	15	45
RC-RS 60	112	35	22,5	20	75
RC-RS 90	140	37	26	20	115
RC-RS 110	177	31	22,5	20	135
RC-RS 160	177	45	33	20	210
RC-RS 220	232	45	33	20	260
RC-RS 260	277	45	33	20	360
RC-RS 300	312	45	33	20	410

DRAWING (RS-RC TF TERMINALS)



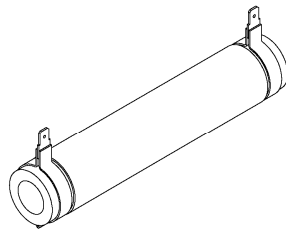
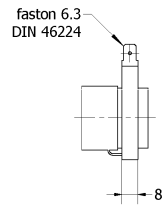
BRACKETS

Model	ONLY FOR TC TERMINALS	ONLY FOR TF TERMINALS	ONLY FOR TC TERMINALS	Weight [gr]
RC-RS 15	SQ/SC 10	SM 10		13
RC-RS 25	SQ/SC 13	SM 13		20
RC-RS 50	SQ/SC 16/20	SM 16	SA/1-SA/2 16x90	45
RC-RS 60	SQ/SC 16/20	SM 20	SA/1 20x100	75
RC-RS 90	SQ/SC 23	SM 23	SA/1 23x127	115
RC-RS 110	SQ/SC 16/20	SM 20	SA/1-SA/2 20x165	135
RC-RS 160	SQ/SC 30	SM30	SA/1-SA/2 30x165	210
RC-RS 220	SQ/SC 30	SM 30	SA/1 30x220	260
RC-RS 260	SQ/SC 30	SM 30	SA/1 30x265	360
RC-RS 300	SQ/SC 30	SM 30		410

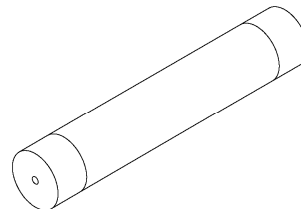
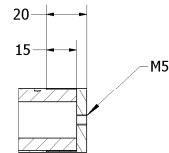


SPECIAL TERMINALS

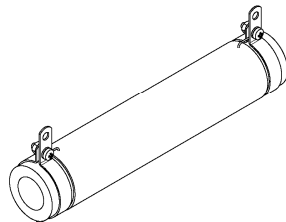
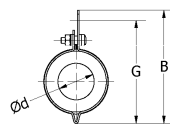
FASTON



TM



TRACTION



TS

