

This type of shunt are particularly usable in all application areas where the tension fall is proportional to the circuit current.

The fundamental characteristic of the resistive alloy which composes them is the low resistance variation to the temperature variation.

The particular construction lets this element particularly rugged and compact.

Utilized principally for:

- welding machine
- feeders

MAIN TECHNICAL CHARACTERISTICS (from 1 to 15.000 [A] and 60 [mV])

MODEL	Current [A]	Voltage fall [mV]	Screw Uni 5739	Nuts Uni 5588	Washers Uni 6592	Washers Grover Uni 1751	Dis.
SH01 - 60	1 ÷ 25	60	M5x8 - M5x12	-	M5	-	1
SH02 - 60	30 ÷ 200	60	M5x8 - M8x16	-	M5 - M8	-	2
SH03 - 60	200 ÷ 350	60	M5x8 - M12x40	M12	M5 - M12	M12	3
SH04 - 60	400 ÷ 700	60	M5x8 - M16x45	M16	M5 - M16	M16	3
SH05 - 60	750 ÷ 1000	60	M5x8 - M20x50	M20	M5 - M20	M20	3
SH06 - 60	1200 ÷ 1500	60	M5x8 - M16x45	M16	M5 - M16	M16	3
SH07 - 60	2000 ÷ 2500	60	M5x8 - M20x50	M20	M5 - M20	M20	3
SH08 - 60	3000	60	M5x8 - M16x60	M16	M5 - M16	M16	4
SH09 - 60	4000	60	M5x8 - M20x60	M20	M5 - M20	M20	4
SH10 - 60	5000 ÷ 6000	60	M5x8 - M20x75	M20	M5 - M20	M20	4
SH11 - 60	10000	60	M5x8 - M20x85	M20	M5 - M20	M20	4
SH12 - 60	15000	60	M5x8 - M20x85	M20	M5 - M20	M20	4

MAIN TECHNICAL CHARACTERISTICS (from 1 to 15.000 [A] and 150 [mV])

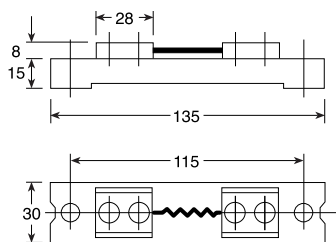
MODEL	Current [A]	Voltage fall [mV]	Screw Uni 5739	Nuts Uni 5588	Washers Uni 6592	Washers Grover Uni 1751	Dis.
SH01 - 150	1 ÷ 25	150	M5x8 - M5x12	-	M5	-	1
SH02 - 150	30 ÷ 150	150	M5x8 - M8x16	-	M5 - M8	-	2
SH03 - 150	200 ÷ 350	150	M5x8 - M12x40	M12	M5 - M12	M12	3
SH04 - 150	400 ÷ 700	150	M5x8 - M16x45	M16	M5 - M16	M16	3
SH05 - 150	750 ÷ 1000	150	M5x8 - M20x50	M20	M5 - M20	M20	3
SH06 - 150	1200 ÷ 1500	150	M5x8 - M16x60	M16	M5 - M16	M16	4
SH07 - 150	2000 ÷ 2500	150	M5x8 - M20x60	M20	M5 - M20	M20	4
SH08 - 150	3000	150	M5x8 - M16x75	M16	M5 - M16	M16	4
SH09 - 150	4000	150	M5x8 - M20x75	M20	M5 - M20	M20	4
SH10 - 150	5000 ÷ 6000	150	M5x8 - M20x75	M20	M5 - M20	M20	4
SH11 - 150	10000	150	M5x8 - M20x85	M20	M5 - M20	M20	4
SH12 - 150	15000	150	M5x8 - M20x85	M20	M5 - M20	M20	4

MECHANIC CHARACTERISTICS

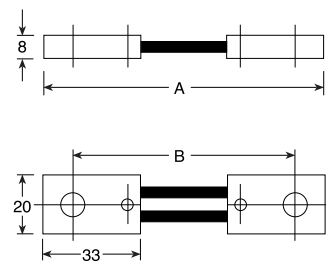
MODEL	DIS.	A	B	C	D	E	F	G	H	notes
SH 02-60	2	100	80							
SH 03-60	3	145	105	55	30					
SH 04-60	3	145	105	55	40					
SH 05-60	3	165	115	65	80					
SH 06-60	3	165	115	65	90					
SH 07-60	3	165	115	65	120					
SH 08-60	4	185	115	65	90	10	48	60	15	
SH 09-60	4	165	115	65	120	10	60	60	15	
SH 10-60	4	175	125	70	154	15	52x2*	130	25	* 3 holes x screws M20
SH 11-60	4	185	135	75	206	20	52x3*	170	30	* 4 holes x screws M20
SH 12-60	4	185	135	75	310	20	52x5*	170	30	* 6 holes x screws M20

MODEL	DIS.	A	B	C	D	E	F	G	H	notes
SH 02-150	2	225	205							
SH 03-150	3	270	230	55	30					
SH 04-150	3	270	230	55	40					
SH 05-150	3	290	240	65	80					
SH 06-150	4	290	240	65	90	10	48	60	15	
SH 07-150	4	290	240	65	120	10	60	60	15	
SH 08-150	4	300	250	70	120	15	60	130	25	
SH 09-150	4	300	250	70	120	15	60	130	25	
SH 10-150	4	300	250	70	154	15	52x2*	130	25	* 3 holes x screws M20
SH 11-150	4	310	260	75	206	20	52x3*	170	30	* 4 holes x screws M20
SH 12-150	4	310	260	75	310	20	52x5*	170	30	* 6 holes x screws M20

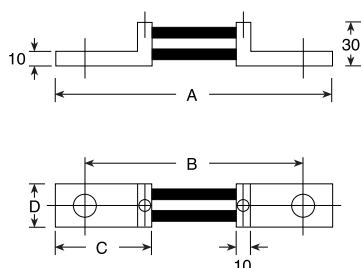
Dis. 1



Dis. 2



Dis. 3



Dis. 4

