

## High Temperature capacitor +150°C

Low serie resistance & inductance

*Faible résistance & inductance série*

**+150°C environment**

*Environnement +150°C*



**Dielectric - Diélectrique**

Metallized film - *Film métallisé*

**Housing - Boîtier**

Epoxy charged with fibreglass tube

*Tube en époxy chargée en fibre de glasse*

**Terminals - Sorties**

Screw terminals, threaded inserts

*Vis, insert femelle*

**Tolerance - Tolérance**

± 5, ± 10 %

**Operating temperature - Température d'utilisation**

-50° to +150°C - *-50°C à +150°C*

**Test voltage between terminals**

*Tension d'essai entre bornes*

1.5 U<sub>r</sub> (10 seconds) - *1.5 U<sub>r</sub> (10 secondes)*

**Insulating voltage - Test d'isolement**

AC 20 kV 50HZ



amelec Electronic GmbH  
Brunnwiesenstrasse 6A  
8157 Dielsdorf



Tel.: 044 862 00 62  
Fax: 044 862 00 63

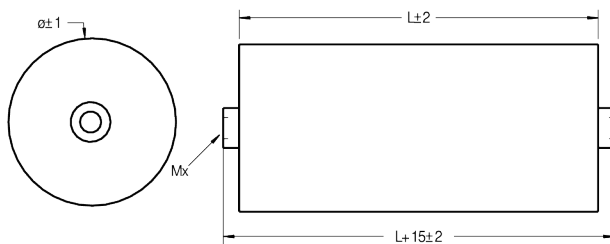


info@amelec.ch  
www.amelec.ch  
shop.amelec.ch

Part number Code article	Capacitance Capacité (nF)	DC voltage Tension DC	$\hat{I}$ (kA)	$I_s$ (kA)	$I_{rms}$ $I_{eff}$	$\varnothing$ (mm)	L (mm)	Terminals Sorties	Weight (g)
4TNA1UPT	1	5000	0.9	3	10	40	130	M5 / INS5	250
4TNA2U5PT	2.5	5000	2.3	9	22	50	130	M5 / INS5	380
4TNA5UPT	5	5000	4.8	15	40	65	130	M5 / INS5	630
4TNA7U5PT	7.5	5000	7	25	60	80	130	M5 / INS5	940
4TNA10UPT	10	5000	9.5	30	70	90	130	M12 / INS8	1200
4TNA12U5PT	12.5	5000	12	35	85	100	130	M12 / INS8	1450
4TNA15UPT	15	5000	14	45	90	105	130	M12 / INS8	1600
4TNA17U5PT	17.5	5000	16.5	45	100	120	130	M12 / INS8	2100
4TNA20UPT	20	5000	19	50	140	120	130	M12 / INS8	2100
4TNA2S0U5PT	0.5	10 000	0.9	3	10	40	250	M5 / INS5	470
4TNA2S1UPT	1	10 000	1.9	6	18	50	250	M5 / INS5	720
4TNA2S2U5PT	2.5	10 000	4.8	15	40	50	250	M5 / INS5	720
4TNA2S3U3PT	3.3	10 000	6.3	20	50	75	250	M5 / INS5	1590
4TNA2S5UPT	5	10 000	9.5	30	70	90	250	M12 / INS8	2270
4TNA2S6U8PT	6.8	10 000	13	40	85	105	250	M12 / INS8	3100
4TNA2S7U5PT	7.5	10 000	14	45	90	105	250	M12 / INS8	3100
4TNA2S8U2PT	8.2	10 000	15.5	45	100	120	250	M12 / INS8	4000
4TNA2S10UPT	10	10 000	19	50	140	120	250	M12 / INS8	4000

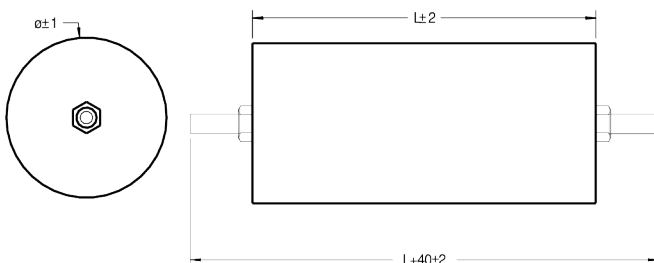
**Terminals : threaded inserts INS5 (M5) or INS8 (M8)**

*Sorties : inserts femelle INS5 (M5) ou INS8 (M8)*



**Terminals : screw M5 or M12**

*Sorties : vis M5 ou M12*



amelec Electronic GmbH  
Brunnwiesenstrasse 6A  
8157 Dielsdorf



Tel.: 044 862 00 62  
Fax: 044 862 00 63



info@amelec.ch  
www.amelec.ch  
shop.amelec.ch