

**Self-healing - Non inductive**  
*Auto-cicatrisant - Non inductif*

**Start-up & phase shift**  
**Compensation of inductive loads**  
*Démarrage et déphasage moteur*  
*Compensation des charges inductives*



**Dielectric - Diélectrique**

Metallized polypropylene MKP - Polypropylène métallisé MKP

**Housing - Boîtier**

Cylindrical case, self extinguishing plastic in PC-ABS UL 94 V0  
 Cylindrique en plastique auto-extinguible PC-ABS-UL 94 V0

**Sealing - Obturation**

Polyurethane resin - Résine polyuréthane

**Tolerance - Tolérance**

± 2, ± 5, ± 10 % Asymetrical upon request - Asymétrique sur demande

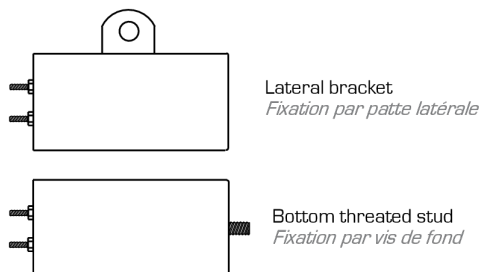
**Operating temperature - Température d'utilisation**

-40° to +85°C - -40°C à +85°C

**Test voltage between terminals**

*Tension d'essai entre bornes*  
 2 x U<sub>n</sub> (10 seconds) - 2 x U<sub>n</sub> (10 secondes)

**Fixing of the case - Fixation du boîtier**



**Rated voltage U<sub>n</sub> - Tension nominale U<sub>n</sub>**

From AC 250V up to AC 600V - De 250V à 600V AC

**Rated frequency - Fréquence nominale**

50-60 Hz

**Maximum operating voltage & current**

*Tension et courant de service max*  
 U<sub>max</sub>: 1.1xU<sub>n</sub> I<sub>max</sub>: 1.3xI<sub>n</sub>

**Temperature coefficient - Coefficient de température**

-300 to -150 ppm / °C - 300 à -150 ppm / °C

**Standard - Normes**

IEC 252-EN 60252 VDE 560-8 - CEI 252-EN 60252 VDE 560-8

**Life expectancy - Durée de vie**

T<sub>min</sub>: -25°C, T<sub>max</sub>: +55°C, +70°C, +85°C  
 Damp heat days - Nbre jours de l'essai à chaleur humide  
 21  
 Class of safety - Classe de sécurité  
 P0

Code article Part number	250 V AC 350 V DC	400 V AC 560 V DC	550 V AC 800 V DC
PC	10 000 h		
PE	30 000 h	10 000 h	1 000 h*
PMF		30 000 h	3 000 h

\*T<sub>max</sub>: 70°C



amelec Electronic GmbH  
 Brunnwiesenstrasse 6A  
 8157 Dielsdorf



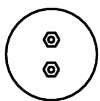
Tel.: 044 862 00 62  
 Fax: 044 862 00 63



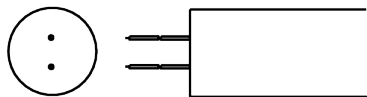
info@amelec.ch  
 www.amelec.ch  
 shop.amelec.ch

Part number <i>Code article</i>	Capacitance <i>Capacité</i>	Ø <i>(mm)</i>	L <i>(mm)</i>	$I_{peak}$ <i><math>I_{crête}</math></i>	$I_{rms}$ <i><math>I_{eff}</math></i>	ESR <i>(mΩ)</i>
PC100PL	1	21	35	35	0.7	27
PC150PL	1.5	21	35	35	0.7	19
PC200PL	2	21	35	35	0.7	15
PC250PL	2.5	21	45	35	0.7	12.5
PC300PL	3	21	45	35	0.7	10.5
PC400PL	4	25	49	70	1	8
PC500PL	5	25	49	70	1	6.5
PC600PL	6	30	49	70	1.2	6
PC800PL	8	30	49	80	1.5	4.6
PC1000PL	10	30	49	80	1.5	3.9
PC1200PL	12	30	66	90	1.6	3.6
PC1600PL	16	35	66	120	2.4	3
PC2000PL	20	35	66	150	2.7	2.6
PC2500PL	25	40	68	180	3.5	2.3
PC3000PL	30	40	68	180	3.5	2.1
PC3500PL	35	45	92	290	5.3	2
PC4000PL	40	45	92	300	6	1.9
PC5000PL	50	45	92	350	6.5	1.7
PE100PL	1	21	49	150	1.1	29
PE150PL	1.5	21	49	180	1.6	20
PE200PL	2	21	49	200	2.2	15
PE250PL	2.5	25	49	230	2.8	12.5
PE300PL	3	25	49	250	3.3	10.5
PE400PL	4	30	49	280	3.5	8.5
PE500PL	5	30	49	300	3.5	7
PE600PL	6	30	49	320	3.5	5.9
PE800PL	8	30	66	320	3.5	4.8
PE1000PL	10	35	66	320	3.5	4.2
PE1200PL	12	35	66	320	3.5	3.8
PE1600PL	16	35	95	400	4.5	3.2
PE2000PL	20	40	95	420	4.8	2.8
PE2500PL	25	45	92	450	5	2.5
PE3000PL	30	45	92	450	5	2.2
PE3500PL	35	45	92	450	5	2
PMF050PL	0.5	21	49	35	0.7	50
PMF100PL	1	25	49	35	0.7	26
PMF150PL	1.5	30	49	35	0.7	18
PMF200PL	2	30	66	55	1	14
PMF250PL	2.5	30	66	55	1	11.2
PMF300PL	3	35	66	80	1.5	10
PMF400PL	4	35	66	80	1.5	7.9
PMF500PL	5	40	68	80	1.5	6.6
PMF600PL	6	40	68	120	2.5	5.6
PMF800PL	8	40	68	120	2.5	4.5
PMF1000PL	10	45	92	180	3.5	3.8

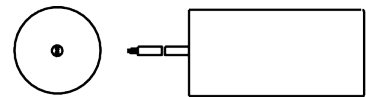
## Terminals - Sorties



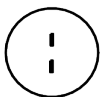
A - Screw terminals - *Tiges filetées*



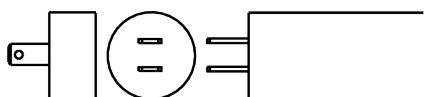
B - Insulated wires - *Fils gainés*



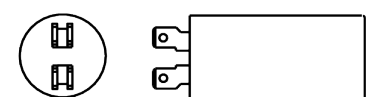
C - Double insulated wires  
*Fils double gaine*



D - 2.8 Singles tags - *Cosses simples 2.8*



E - 6.35 Singles tags  
*Cosses simples 6.35*



F - 6.35 double tags  
*Cosses doubles 6.35*



amelec Electronic GmbH  
Brunnwiesenstrasse 6A  
8157 Dielsdorf



Tel.: 044 862 00 62  
Fax: 044 862 00 63



info@amelec.ch  
www.amelec.ch  
shop.amelec.ch