

PRODUCT CODE - RADIAL ALUMINUM ELECTROLYTIC CAPACITORS

THT type example:

GH series ▪ 330µF ▪ 80V ▪ ±20% ▪ Ø 13mm ▪ H 20mm ▪ P 5mm ▪ Tape Ammo ▪ AEC-Q200

1	2	3	4	5	6	7	8	9	10	11	12	13	14	15	16	17	18	19	20
G	H	3	3	1	M	0	8	0	I	2	0	0	E	T	A	X	-	-	-
Series		Capacitance			Capacitance tolerance	Voltage			Case Ø (mm)	Height (mm)			Type code	Taping / lead treatment *		Special requirement			
Code	µF	Code	%		Code	Volt	Code	ØD	Code	H		Code	Type	See chapters taping or lead treatment		See datasheet for reference			
OR1	0.1	H	±5		004	4	B	4	050	5		A	Without lead treatment						
R47	0.47	K	±10		6R3	6.3	C	5	070	7		E	With lead treatment						
010	1	S	±15		010	10	E	6.3	090	9									
4R7	4.7	M	±20		016	16	F	8	110	11									
100	10	N	±30		025	25	G	10	115	11.5									
220	22	D	±40		035	35	H	12	125	12.5									
101	100	I	+5 to +20		050	50	Z	12.5	130	13									
561	560	B	0 to -20		063	63	I	13	140	14									
102	1000	G	0 to +10		080	80	J	16	150	15									
472	4700	Z	0 to +20		100	100	K	18	160	16									
103	10000	Y	0 to +30		160	160	L	20	200	20									
333	33000	X	0 to +40		200	200	A	0 to +50	250	25									
		J	-5 to +20		220	220	J	22	300	30									
		C	-5 to +30		250	250			315	31.5									
		E	-8 to +5		350	350			350	35									
		V	-10 to +20		400	400			355	35.5									
		Q	-10 to +30		420	420			400	40									
		T	-10 to +50		450	450			450	45									
		W	-20 to +10		500	500			500	50									
		P	-15 to +20						550	55									
		L	-25 to +20						600	60									
		U	-30 to 0																
		F	-35 to 0																
		O	-50 to 0																

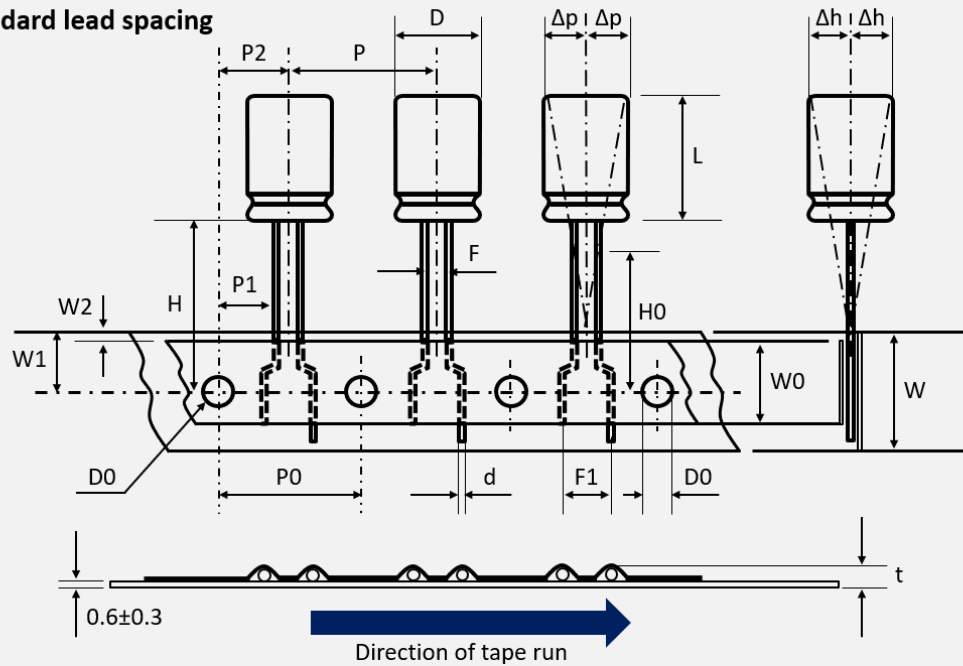
* See chapter taping or lead treatment for further information
Please consult CapXon for further assistance

MARKING - RADIAL ALUMINUM ELECTROLYTIC CAPACITORS

Aluminum Electrolytic Capacitor - Radial type		Standard type	AEC-Q200 type	
	CapXon:	Manufacturer trademark		
	330µF:	Nominal capacitance		
	80V:	Rated voltage (V) ▪ Standard type		
		(-) polarity (Cathode indicate)		
	GH:	Series		
105°C:	Maximum operating temperature			
P1944:	Production datacode year/week (ex. 2019/CW44)			
X:	AEC-Q200 type			
VENT:	Safety vent			
				Front side
				Back side

TAPING • RADIAL ALUMINUM ELECTROLYTIC CAPACITORS

T1 taping • ØD 5mm • standard lead spacing



Example

F	H	3 3 0	M	0 3 5	C	1 1 0	E	T B	-	-	-	-
Series	Capacitance	Tolerance	Voltage	ØD (mm)	Height (mm)	Type code	Lead treatment	Special requirement				

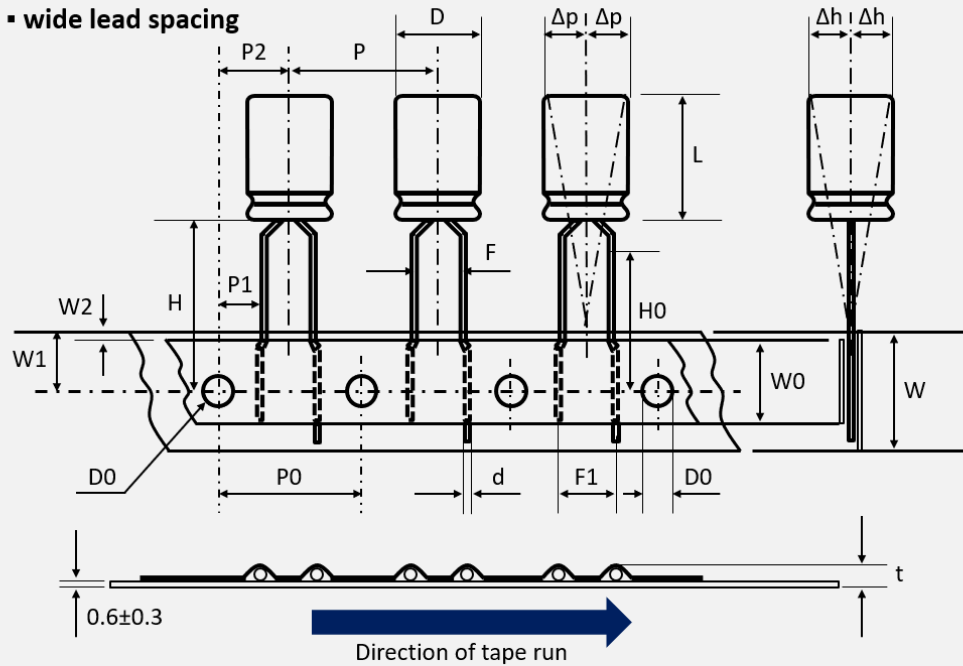
All dimensions in mm

	D	L	d	P	P0	P1	P2	F	F1	W	W0	W1	W2	H	D0	Δh	Δp	T	Code															
Tol	±0.5	-	±0.02	±1.0	±0.2	±0.7	±1.3	+0.4 -0.2	±0.5	±0.5	±0.5	±0.5	Max	+0.75 -0.5	±0.2	Max	Max	Max																
Item	5	5-7 (+1)	0.45	12.7	12.7	5.35	6.35	2	5	18	11	9	2	18.5	4	1	1	1.5	TB															
		9 (±2)	0.5																															
		11-15 (±1.5)	0.5																															
6.3	5 (+1)	0.45	12.7	12.7	5.1	6.35	2.5	5	18	11	9	2	18.5	4	1	1	1.5		TC															
	7 (+1)	0.5																																
	9 (±2)	0.5																																
		11-15 (±1.5)	0.5																															

Table and example show the ammo package version. Coding RB or RC instead of TB or TC means the reel package version.

TAPING • RADIAL ALUMINUM ELECTROLYTIC CAPACITORS

T2 taping • $\varnothing D$ 4 and 5mm • wide lead spacing



Example

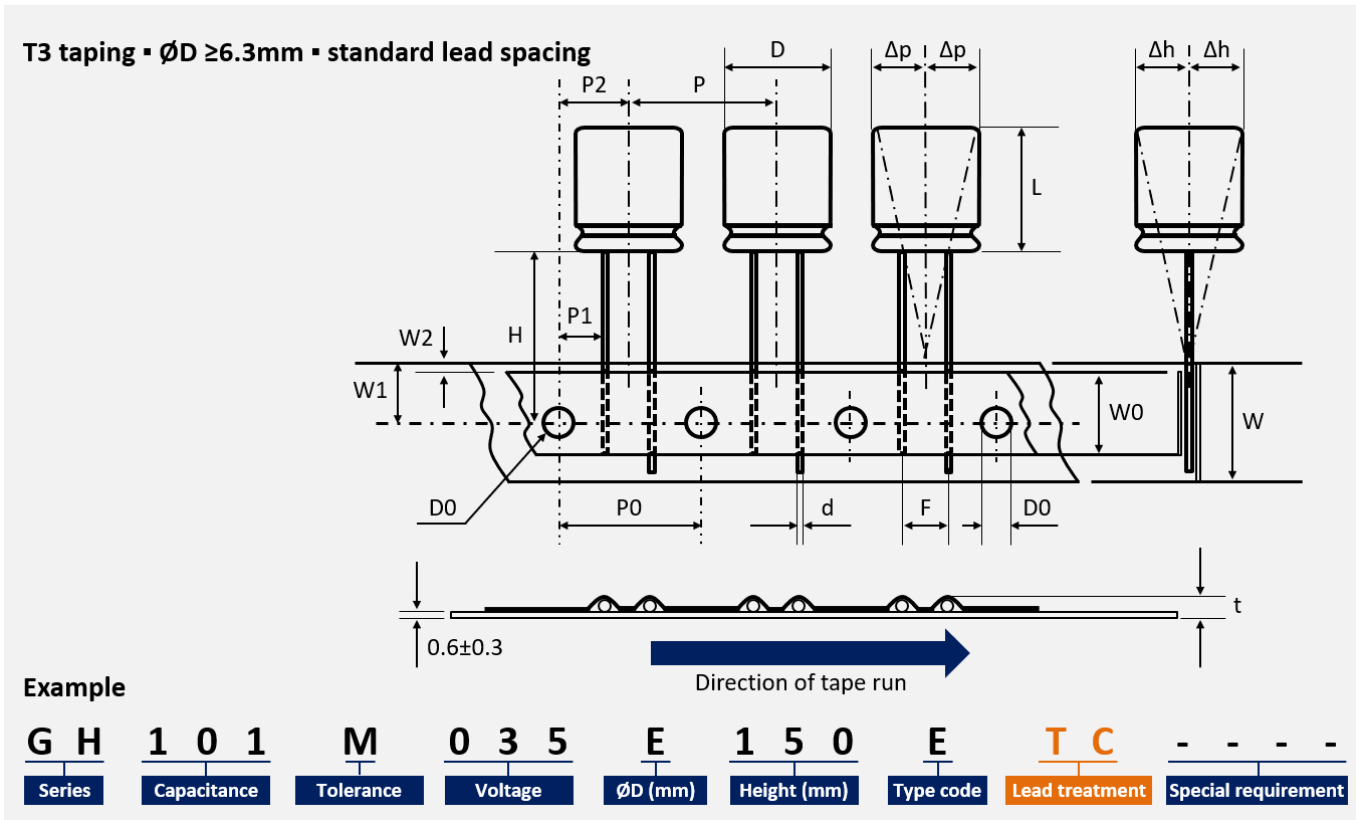
S	W	1 0 1	M	0 0 4	C	0 5 0	E	T C	- - - -
Series	Capacitance	Tolerance	Voltage	$\varnothing D$ (mm)	Height (mm)	Type code	Lead treatment	Special requirement	

All dimensions in mm

	D	L	d	P	P0	P1	P2	F	F1	W	W0	W1	W2	H	D0	Δh	Δp	T	Code
Tol	± 0.5	-	± 0.02	± 1.0	± 0.2	± 0.7	± 1.3	+0.4 -0.2	± 0.5	± 0.5	± 0.5	± 0.5	Max	+0.75 -0.5	± 0.2	Max	Max	Max	Code
Item	4	5-7 (+1)	0.45	12.7	12.7	5.1	6.35	2 2.5	5	18	11	9	2	18.5	4	1	1	1.5	TB TC
		5-7 (+1) 9 (± 2) 11-15 (± 1.5)	0.45 0.5 0.5	12.7 12.7 12.7	12.7 12.7 12.7	5.1 5.1 5.1	6.35 6.35 6.35	2.5 2.5 2.5	5 5 5	18 18 18	11 11 11	9 9 9	2 2 2	18.5 18.5 18.5	4 4 4	1 1 1	1 1 1	1.5 1.5 1.5	TC

Table and example show the ammo package version. Coding RB or RC instead of TB or TC means the reel package version.

TAPING • RADIAL ALUMINUM ELECTROLYTIC CAPACITORS



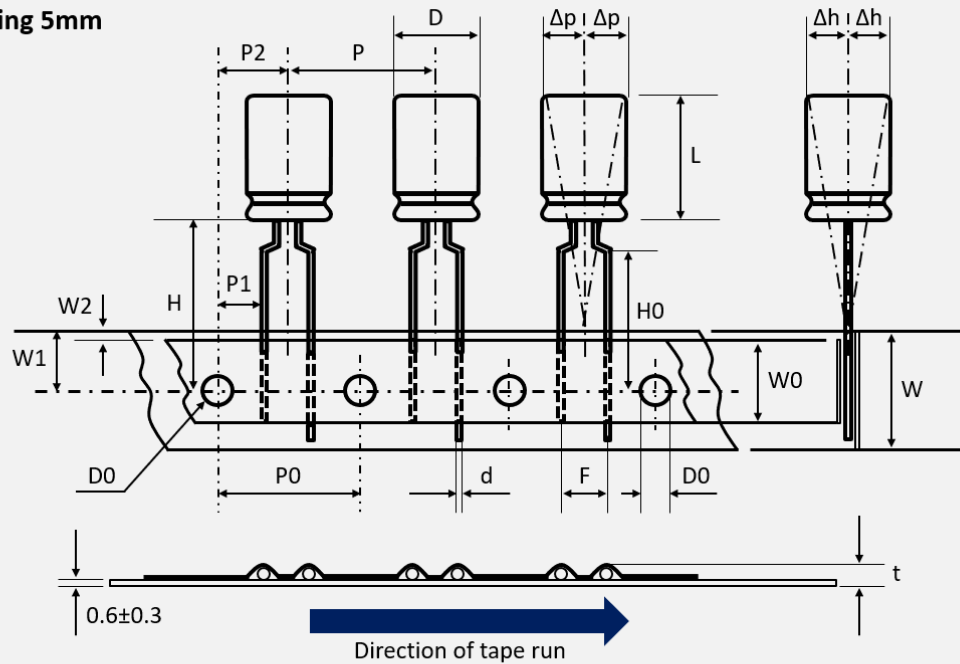
All dimensions in mm

	D	L	d	P	P0	P1	P2	F	W	W0	W1	W2	H	D0	Δh	Δp	T	Code
Tol	± 0.5	-	± 0.02	± 1.0	± 0.2	± 0.7	± 1.3	+0.4 -0.2	± 0.5	± 0.5	± 0.5	Max	+0.75 -0.5	± 0.2	Max	Max	Max	
Item	8	5 (+1)	0.45	12.7	12.7	4.6	6.35	3.5	18	11	9	2	18.5	4	1	1	1	TD
		7 (+1)	0.5															
		9 (± 2)	0.5															
		11.5-16 (± 1.5)	0.5															
	20-25 (± 1.5)	0.6																
	10	7-9 (± 2)	0.6	12.7	12.7	3.85	6.35	5	18	11	9	2	18.5	4	1	1	1.5	TA
12.3-35 (± 1.5)		0.6																
13	13-16 (+2)	0.6	15	15	5	7.5	5	18	15	9	2	18.5	4	2	2	1.5	TA	
	20-35 (± 1.5)	0.6																

Table and example show the ammo package version. Coding RA or RD instead of TA or TD means the reel package version.

TAPING • RADIAL ALUMINUM ELECTROLYTIC CAPACITORS

T4 taping • wide lead spacing 5mm



Example

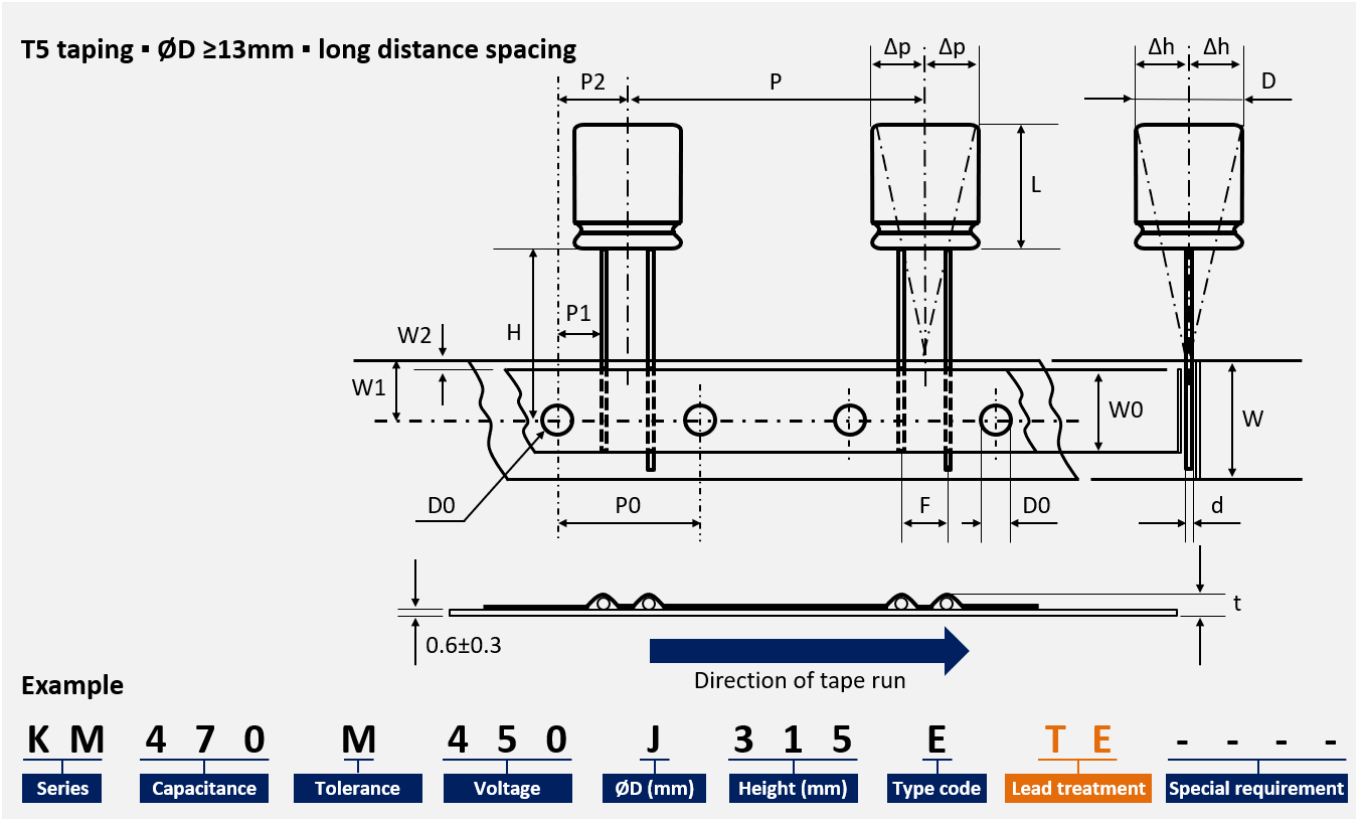
G	H	4 7 0	M	0 6 3	F	1 1 5	E	T A	-	-	-	-
Series	Capacitance	Tolerance	Voltage	ØD (mm)	Height (mm)	Type code	Lead treatment	Special requirement				

All dimensions in mm

	D	L	d	P	P0	P1	P2	F	W	W0	W1	W2	H	H0	D0	Δh	Δp	T	Code
Tol	±0.5	-	±0.02	±1.0	±0.2	±0.7	±1.3	+0.4 -0.2	±0.5	±0.5	±0.5	Max	+0.75 -0.5	±0.5	±0.2	Max	Max	Max	
Item	4	5-7 (+1)	0.45	12.7	12.7	3.85	6.35	5	18	11	9	2	18.5	16.5	4	1	1	1.5	TA
		5-7 (+1)	0.45					5											
	5	9 (±2)	0.5	12.7	12.7	3.85	6.35	5	18	11	9	2	18.5	16.5	4	1	1	1.5	
		11-15 (±1.5)	0.5					5											
	6.3	5 (+1)	0.45	12.7	12.7	3.85	6.35	5	18	11	9	2	18.5	16.5	4	1	1	1.5	
		7 (+1)	0.5					5											
		9 (±2)	0.5					5											
		11-15 (±1.5)	0.5					5											
	8	5 (+1)	0.45	12.7	12.7	3.85	6.35	5	18	11	9	2	18.5	16.5	4	1	1	1	
		7 (+1)	0.5					5											
		8 (+1)	0.6					5											
		9 (±2)	0.5					5											
11.5-16 (±1.5)		0.5	5																
20-25 (±1.5)	0.6	5																	

Table and example show the ammo package version. Coding RA instead of TA means the reel package version.

TAPING • RADIAL ALUMINUM ELECTROLYTIC CAPACITORS

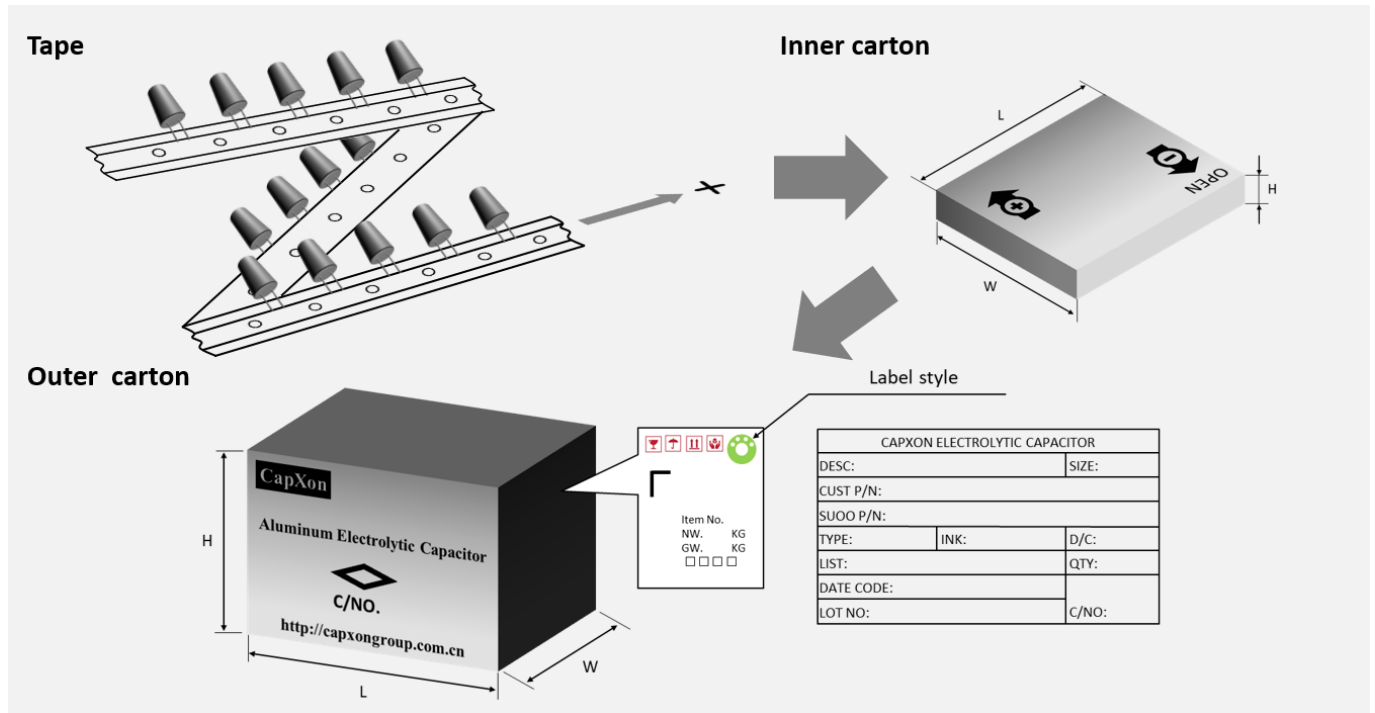


All dimensions in mm

	D	L	d	P	P0	P1	P2	F	W	W0	W1	W2	H	D0	Δh	Δp	T	Code
Tol	± 0.5	-	± 0.02	± 1.0	± 0.2	± 0.7	± 1.3	+0.4 -0.2	± 0.5	± 0.5	± 0.5	Max	+0.75 -0.5	± 0.2	Max	Max	Max	
Item	13	13-16 (+2)	0.6	25.4	12.7	3.85	6.35	5	18	15	9	2	18.5	4	2	2	1.5	PA
		20-35 (± 1.5)																
	16	16-21 (± 2)	0.8	30	15	3.75	7.5	7.5	18	15	9	2	18.5	4	2	2	1.5	TE
		25-35.5 (± 1.5)																
18	13-21 (± 2)	0.8	30	15	3.75	7.5	7.5	18	15	9	2	18.5	4	2	2	1.5		
	25-31.5 (± 1.5)																	
		35.5 (± 2)																

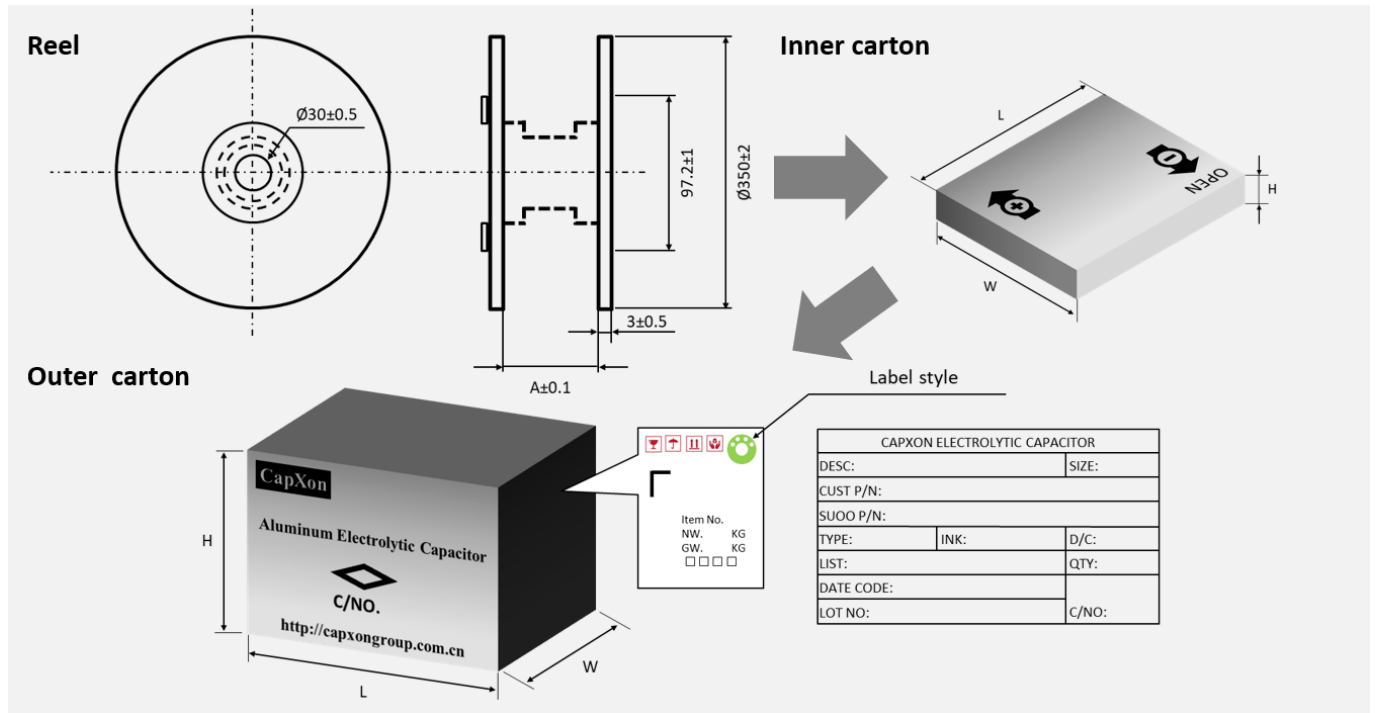
Table and example show the ammo package version. Coding RE or QA instead of TE or PA means the reel package version.

TAPING • RADIAL ALUMINUM ELECTROLYTIC CAPACITORS • AMMO PACK



∅ D (mm)	Length L (mm)	Inner box quantity (pcs)	Inner box size L x W x H (mm)	Outer box quantity (pcs)	Outer box size L x W x H (mm)	Country of origin	Tariff number
4	All	2500	331 x 227 x 51	25000	474 x 343 x 285	China	85322200
5	All	2000	331 x 227 x 51	20000	474 x 343 x 285	China	85322200
6.3	All	1500	331 x 227 x 51	15000	474 x 343 x 285	China	85322200
8	5 to 16	800	331 x 227 x 51	8000	474 x 343 x 285	China	85322200
	17 to 25	800	327 x 191 x 67	8000	474 x 343 x 285	China	85322200
	30 to 35	800	327 x 191 x 67	6400	474 x 343 x 285	China	85322200
10	7 to 15	600	331 x 227 x 51	6000	474 x 343 x 285	China	85322200
	16 to 20	500	331 x 227 x 51	5000	474 x 343 x 285	China	85322200
	21 to 25	500	332 x 190 x 60	2500	474 x 343 x 285	China	85322200
	30	500	327 x 216 x 64	4000	474 x 343 x 285	China	85322200
13	35	500	318 x 254 x 67	2500	474 x 343 x 285	China	85322200
	13 to 20	300	321 x 191 x 57	3000	474 x 343 x 285	China	85322200
	25 to 30	300	327 x 216 x 64	2400	474 x 343 x 285	China	85322200
16	35	400	318 x 254 x 70	2000	474 x 343 x 285	China	85322200
	16	200	327 x 191 x 57	1600	474 x 343 x 285	China	85322200
	20 to 25	200	327 x 216 x 64	1600	474 x 343 x 285	China	85322200
18	> 25	250	343 x 230 x 71	1250	474 x 343 x 285	China	85322200
	16 to 25	200	310 x 260 x 61	1000	474 x 343 x 285	China	85322200
	> 25	200	310 x 260 x 71	1000	474 x 343 x 285	China	85322200

TAPING • RADIAL ALUMINUM ELECTROLYTIC CAPACITORS • REEL PACK

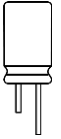


Ø D (mm)	Length L (mm)	A (mm)	Inner box quantity (pcs)	Inner box size L x W x H (mm)	Outer box quantity (pcs)	Outer box size L x W x H (mm)	Country of origin	Tariff number
4	All	45	1800	350 x 350 x 105	10800	375 x 375 x 343	China	85322200
5	All	45	1300	350 x 350 x 105	7800	375 x 375 x 343	China	85322200
6.3	All	45	1000	350 x 350 x 105	6000	375 x 375 x 343	China	85322200
8	5 to 17	45	800	350 x 350 x 105	4800	375 x 375 x 343	China	85322200
	18 to 28	55	800	349 x 349 x 121	4800	375 x 375 x 385	China	85322200
10	7 to 17	45	600	350 x 350 x 105	3600	375 x 375 x 343	China	85322200
	18 to 28	55	600	349 x 349 x 121	3600	375 x 375 x 385	China	85322200
12	17	45	400	350 x 350 x 105	2400	375 x 375 x 343	China	85322200
	18 to 28	55	400	349 x 349 x 121	2400	375 x 375 x 385	China	85322200
13	13 to 17	45	300	350 x 350 x 105	1800	375 x 375 x 343	China	85322200
	18 to 28	55	300	349 x 349 x 121	1800	375 x 375 x 385	China	85322200
16	13 to 17	45	200	350 x 350 x 105	1200	375 x 375 x 343	China	85322200
	18 to 28	55	200	349 x 349 x 121	1200	375 x 375 x 385	China	85322200

PACKAGING - RADIAL ALUMINUM ELECTROLYTIC CAPACITORS STRAIGHT LEADS - BULK PACK



∅ D (mm)	Length L (mm)	Inner bag / Inner row (pcs)	Inner box quantity (pcs)	Inner box size L x W x H (mm)	Outer box quantity (pcs)	Outer box size L x W x H (mm)	Country of origin	Tariff number
3	5	1000/bag	20000	293 x 181 x 223	60000	562 x 318 x 238	China	85322200
4	5 to 7	1000/bag	15000	293 x 181 x 223	45000	562 x 318 x 238	China	85322200
5	7 to 9	1000/bag	15000	293 x 181 x 223	45000	562 x 318 x 238	China	85322200
	11 to 12	1000/bag	10000	293 x 181 x 223	30000	562 x 318 x 238	China	85322200
6.3	5 to 7	1000/bag	10000	293 x 181 x 223	30000	562 x 318 x 238	China	85322200
	11 to 20	1000/bag	8000	293 x 181 x 223	24000	562 x 318 x 238	China	85322200
8	5 to 9	500/bag	6000	293 x 181 x 223	18000	562 x 318 x 238	China	85322200
	11 to 14	500/bag	5000	293 x 181 x 223	15000	562 x 318 x 238	China	85322200
	15 to 16	500/bag	4000	293 x 181 x 223	12000	562 x 318 x 238	China	85322200
	20	500/bag	3000	293 x 181 x 223	9000	562 x 318 x 238	China	85322200
	25 to 30	400/bag	2400	293 x 181 x 223	7200	562 x 318 x 238	China	85322200
	30 to 34	40/line	840	334 x 217 x 68	6720	448 x 354 x 295	China	85322200
	35 to 41	40/line	840	334 x 217 x 79.5	5040	448 x 354 x 248	China	85322200
	42 to 51	40/line	840	334 x 217 x 92	5040	448 x 354 x 295	China	85322200
10	53 to 60	40/line	840	334 x 217 x 92	5040	448 x 354 x 295	China	85322200
	≤ 13	500/bag	4000	293 x 181 x 223	12000	562 x 318 x 238	China	85322200
	14 to 17	500/bag	3000	293 x 181 x 223	9000	562 x 318 x 238	China	85322200
	20	500/bag	2500	293 x 181 x 223	7500	562 x 318 x 238	China	85322200
	24 to 25	400/bag	2000	293 x 181 x 223	6000	562 x 318 x 238	China	85322200
	31 to 34	32/line	544	334 x 217 x 68	4352	448 x 354 x 295	China	85322200
	35 to 41	32/line	544	334 x 217 x 79.5	3264	448 x 354 x 248	China	85322200
	42 to 51	32/line	544	334 x 217 x 92	3264	448 x 354 x 295	China	85322200
12.5	55 to 60	32/line	544	334 x 217 x 92	3264	448 x 354 x 295	China	85322200
	≤ 21	300/bag	1500	293 x 181 x 223	4500	562 x 318 x 238	China	85322200
	25	200/bag	1200	293 x 181 x 223	3600	562 x 318 x 238	China	85322200
	30	200/bag	1000	293 x 181 x 223	3000	562 x 318 x 238	China	85322200
	35	26/line	364	334 x 217 x 79.5	3184	448 x 354 x 248	China	85322200
13	40 to 50	26/line	364	334 x 217 x 92	2184	448 x 354 x 295	China	85322200
	≤ 21	300/bag	1500	293 x 181 x 223	4500	562 x 318 x 238	China	85322200
	25 to 31.5	25/line	350	334 x 217 x 68	2800	448 x 354 x 295	China	85322200
	35.5 to 41	25/line	350	334 x 217 x 79.5	2100	448 x 354 x 248	China	85322200
14.5	42 to 51	25/line	350	334 x 217 x 92	2100	448 x 354 x 295	China	85322200
	31.5 to 32	20/line	220	304 x 196 x 68	1760	415 x 320 x 295	China	85322200
	37	20/line	220	305 x 197 x 79.5	1320	415 x 320 x 295	China	85322200
16	16 to 17	18/line	180	304 x 196 x 55	1800	415 x 320 x 295	China	85322200
	20 to 26	18/line	180	304 x 196 x 68	1440	415 x 320 x 295	China	85322200
	30 to 35.5	18/line	180	305 x 197 x 79.5	1080	415 x 320 x 248	China	85322200
	40 to 50	18/line	180	304 x 196 x 92	1080	415 x 320 x 295	China	85322200
18	15 to 17	32 in all/2 lines	160	304 x 196 x 55	1600	415 x 320 x 295	China	85322200
	20 to 31.5	32 in all/2 lines	160	304 x 196 x 68	1280	415 x 320 x 295	China	85322200
	35	32 in all/2 lines	160	305 x 197 x 79.5	960	415 x 320 x 248	China	85322200
	40 to 51	32 in all/2 lines	160	304 x 196 x 92	960	415 x 320 x 295	China	85322200
20	21 to 31.5	32 in all/2 lines	160	334 x 217 x 68	1280	448 x 354 x 295	China	85322200
	35 to 36	32 in all/2 lines	160	334 x 217 x 79.5	960	448 x 354 x 248	China	85322200
	42 to 51	32 in all/2 lines	160	334 x 217 x 92	960	448 x 354 x 295	China	85322200

**PACKAGING ▪ RADIAL ALUMINUM ELECTROLYTIC CAPACITORS
STRAIGHT LEADS ▪ BULK PACK**


∅ D (mm)	Length L (mm)	Inner bag / Inner row (pcs)	Inner box quantity (pcs)	Inner box size L x W x H (mm)	Outer box quantity (pcs)	Outer box size L x W x H (mm)	Country of origin	Tariff number
22	21 to 26	25 in all/2 lines	100	304 x 196 x 68	800	415 x 320 x 295	China	85322200
	30 to 36	25 in all/2 lines	100	305 x 197 x 79.5	600	415 x 320 x 248	China	85322200
	41 to 46	25 in all/2 lines	100	304 x 196 x 92	600	415 x 320 x 295	China	85322200
	47 to 70	25 in all/2 lines	100	304 x 196 x 92	600	415 x 320 x 295	China	85322200
25	21 to 26	25 in all/2 lines	100	334 x 217 x 68	800	448 x 354 x 295	China	85322200
	30	25 in all/2 lines	100	334 x 217 x 79.5	600	448 x 354 x 260	China	85322200
	≥ 41	25 in all/2 lines	100	334 x 217 x 92	600	448 x 354 x 295	China	85322200



PACKAGING - RADIAL ALUMINUM ELECTROLYTIC CAPACITORS CUTTED LEADS - BULK PACK

∅ D (mm)	Length L (mm)	Inner bag / Inner row (pcs)	Inner box quantity (pcs)	Cutting height (mm)	Outer box quantity (pcs)	Outer carton quantity (pcs)	Country of origin	Tariff number
3	All L	2500/bag	10000	N/A	6	60000	China	85322200
4	5 to 7	2000/bag	8000	N/A	5	40000	China	85322200
5	5 to 7	2000/bag	8000	N/A	5	40000	China	85322200
	11 to 12	1000/bag	6000	C < 7	5	30000	China	85322200
	11 to 12	1000/bag	4000	C ≥ 7	5	20000	China	85322200
6.3	5 to 7	1000/bag	6000	N/A	5	30000	China	85322200
	9 to 12	1000/bag	4000	N/A	5	20000	China	85322200
	15 to 20	1000/bag	4000	N/A	6	24000	China	85322200
8	≤ 9	500/bag	4000	N/A	6	24000	China	85322200
	11 to 13	500/bag	3000	C < 7	6	18000	China	85322200
	14	500/bag	2500	C < 7	6	15000	China	85322200
	15 to 16	500/bag	2000	C < 7	6	12000	China	85322200
	20	500/bag	1000	C < 7	12	12000	China	85322200
	30 to 35.5	500/bag	1000	C < 7	8	8000	China	85322200
	36 to 41	40/line	840	C < 7	10	8400	China	85322200
	42 to 51	40/line	840	C < 7	6	5040	China	85322200
10	52 to 60	40/line	840	C < 7	6	5040	China	85322200
	7 to 10	500/bag	1000	C < 7	12	12000	China	85322200
	12 to 17	500/bag	1000	C < 7	10	10000	China	85322200
	20	500/bag	1000	C < 7	8	8000	China	85322200
	24 to 25	500/bag	1000	C < 7	6	6000	China	85322200
	30 to 35.5	32/line	1000	C < 7	12	6480	China	85322200
	36 to 41	32/line	540	C < 7	10	5400	China	85322200
	42 to 51	32/line	540	C < 7	6	3240	China	85322200
13	52 to 60	32/line	540	C < 7	6	3240	China	85322200
	31 to 35.5	25/line	350	C < 7	6	2100	China	85322200
	36 to 41	25/line	350	C < 7	5	1750	China	85322200
	42 to 51	25/line	350	C < 7	4	1400	China	85322200
	52 to 60	25/line	350	C < 7	4	1400	China	85322200
16	35 to 40	25/line	350	C ≥ 12	4	1400	China	85322200
	16 to 32	18/line	180	C < 7	6	1080	China	85322200
	35 to 41	18/line	180	C < 7	5	900	China	85322200
	21 to 24	18/line	180	C ≥ 7	6	1080	China	85322200
	25 to 30	18/line	180	C ≥ 7	5	900	China	85322200
18	31 to 41	18/line	180	C ≥ 7	4	720	China	85322200
	15 to 21	32 in all/2 lines	160	N/A	6	960	China	85322200
	25 to 31.5	32 in all/2 lines	160	C < 7	6	960	China	85322200
	25 to 31.5	32 in all/2 lines	160	C ≥ 7	5	800	China	85322200
	35.5 to 41	32 in all/2 lines	160	C < 7	5	800	China	85322200
	35.5 to 41	32 in all/2 lines	160	C ≥ 7	4	640	China	85322200
	≥ 45	32 in all/2 lines	160	N/A	4	640	China	85322200
20	25 to 40	30 in all/2 lines	150	C < 7	5	750	China	85322200
	25 to 40	30 in all/2 lines	150	C ≥ 7	4	600	China	85322200
	≥ 41	30 in all/2 lines	150	C < 7	4	600	China	85322200
	≥ 41	30 in all/2 lines	150	C ≥ 7	3	450	China	85322200

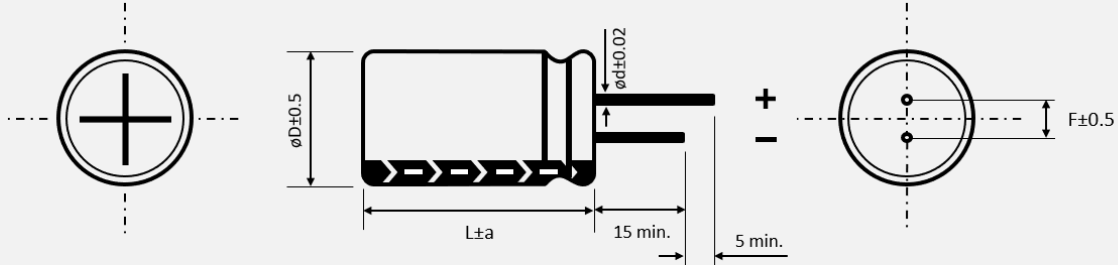
PACKAGING ▪ RADIAL ALUMINUM ELECTROLYTIC CAPACITORS CUTTED LEADS ▪ BULK PACK



∅ D (mm)	Length L (mm)	Inner bag / Inner row (pcs)	Inner box quantity (pcs)	Cutting height (mm)	Outer box quantity (pcs)	Outer carton quantity (pcs)	Country of origin	Tariff number
22	21 to 31	25 in all/2 lines	100	C < 7	6	600	China	85322200
	21 to 31	25 in all/2 lines	100	C ≥ 7	5	500	China	85322200
	36 to 41	25 in all/2 lines	100	C < 7	5	500	China	85322200
	36 to 41	25 in all/2 lines	100	C ≥ 7	6	600	China	85322200
	46 to 51	25 in all/2 lines	100	C < 7	4	400	China	85322200
	46 to 51	25 in all/2 lines	100	C ≥ 7	3	300	China	85322200
	≥ 56	25 in all/2 lines	100	C < 7	3	300	China	85322200
25	21 to 26	25 in all/2 lines	100	N/A	6	600	China	85322200
	30 to 37	25 in all/2 lines	100	N/A	5	500	China	85322200
	40 to 51	25 in all/2 lines	100	N/A	4	400	China	85322200
	≥ 52	25 in all/2 lines	100	N/A	3	300	China	85322200

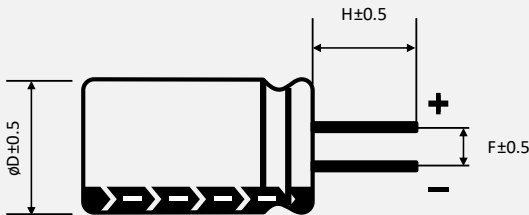
AVAILABLE LEAD TREATMENTS • RADIAL ALUMINUM ELECTROLYTIC CAPACITORS

Radial type • standard version • standard lead spacing (all dimension in mm)



$\varnothing D$ (mm)	4	5	6.3	8			10	13	16		18		22	25		
F (mm)	1.5	2	2.5	3.5			5	5	7.5		7.5		10	12.5		
L (mm)	All	≤ 7	> 7	≤ 5	> 5	≤ 5	7	9 to < 20	≥ 20	All	25 to 35.5	$< 25 \ \& \ \geq 40$	25 to 31.5	$< 25 \ \& \ \geq 35$	All	All
$\varnothing d$ (mm)	0.45	0.45	0.5	0.45	0.5	0.45	0.5	0.6	0.6	0.6	0.8		0.8	0.8	1	1
a (mm)	1	1	1	1	1	1	1.5	1.5	1.5	1.5	2	1.5	2	2	2	2

Radial type • CA version • cutted leads • standard lead spacing



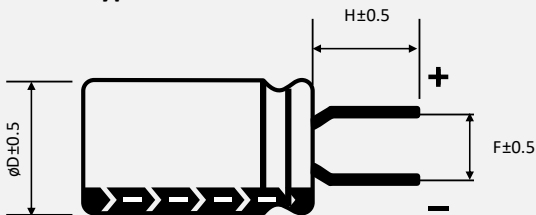
Length „H“ customized. See product code table customized lead length for further reference.

$\varnothing D$ (mm)	4	5	6.3	8	10	13	16	18	22	25
F (mm)	1.5	2	2.5	3.5	5	5	7.5	7.5	10	12.5

Example

F	H	2	2	1	M	6	R	3	E	1	1	0	E	C	A	-	-	-
Series	Capacitance	Tolerance	Voltage	$\varnothing D$ (mm)	Height (mm)	Type code	Lead treatment	Special requirement										

Radial type • CE version • cutted leads • wide lead spacing ≤ 2.5 mm



Length „H“ customized. See product code table customized lead length for further reference.

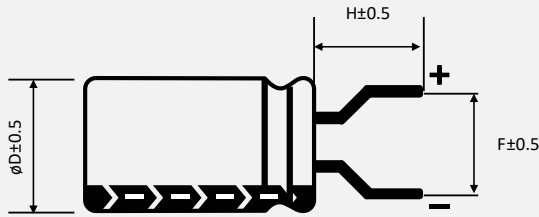
$\varnothing D$ (mm)	4	5
F (mm)	2	2.5

Example

S	A	2	R	2	M	0	5	0	B	0	5	0	E	C	E	-	-	-
Series	Capacitance	Tolerance	Voltage	$\varnothing D$ (mm)	Height (mm)	Type code	Lead treatment	Special requirement										

AVAILABLE LEAD TREATMENTS • RADIAL ALUMINUM ELECTROLYTIC CAPACITORS

Radial type • **CF / CG / CH / CI** version • cutted leads • wide lead spacing $\geq 2.5\text{mm}$



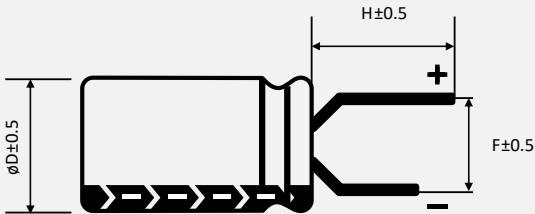
$\varnothing D$ (mm)	4	4	4	5	5	6.3	6.3	8	10	13
F (mm)	2.5	3.5	5	3.5	5	3.5	5	5	7.5	7.5
Code	CF	CG	CH	CG	CH	CG	CH	CH	CI	CI

Example

Length „H“ customized. See product code table customized lead length for further reference.

G H	1 2 1	M	0 1 6	E	1 1 0	E	CH	-	-	-
Series	Capacitance	Tolerance	Voltage	$\varnothing D$ (mm)	Height (mm)	Type code	Lead treatment	Special requirement		

Radial type • **FB / FC / FD** version • wide lead spacing $\leq 3.5\text{mm}$ • long anode



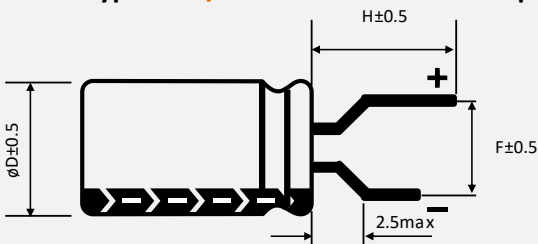
$\varnothing D$ (mm)	4	5	6.3
F (mm)	2	2.5	3.5
Code	FB	FC	FD

Example

Length „H“ customized. See product code table customized lead length for further reference.

S G	R 3 3	M	0 5 0	B	0 7 0	E	FB	-	-	-
Series	Capacitance	Tolerance	Voltage	$\varnothing D$ (mm)	Height (mm)	Type code	Lead treatment	Special requirement		

Radial type • **FA / FE** version • wide lead spacing $\geq 5\text{mm}$ • long anode



$\varnothing D$ (mm)	4	5	6.3	8	10	13
F (mm)	5	5	5	5	7.5	7.5
Code	FA	FA	FA	FA	FE	FE

Example

Length „H“ customized. See product code table customized lead length for further reference.

S M	2 2 1	M	0 1 0	E	0 7 0	E	FA	-	-	-
Series	Capacitance	Tolerance	Voltage	$\varnothing D$ (mm)	Height (mm)	Type code	Lead treatment	Special requirement		

AVAILABLE LEAD TREATMENTS • RADIAL ALUMINUM ELECTROLYTIC CAPACITORS

Radial type • **KA** version • kinked anode and cathode • standard lead spacing

Ø D (mm)	5	6.3	8	10	13	16	18	22
F (mm)	2	2.5	3.5	5	5	7.5	7.5	10
H ₁ (mm)	1.8	1.8	1.8	1.8	1.8	1.8	1.8	1.8
H ₂ (mm)	4	4	4	4.5	4.5	4.5	4.5	4.5
E (mm)	1.12	1.12	1.32	1.32	1.32	1.32	1.32	1.82

Example

T E	2 2 2	M	0 2 5	J	3 5 5	E	K A	- - - -
Series	Capacitance	Tolerance	Voltage	ØD (mm)	Height (mm)	Type code	Lead treatment	Special requirement

Radial type • **KE** version • kinked anode and cathode • wide lead spacing ≤ 2.5mm

Ø D (mm)	4	5
F (mm)	2	2.5
H ₁ (mm)	1.8	1.8
H ₂ (mm)	4	4
E (mm)	1.12	1.12

Example

G W	1 5 1	M	6 R 3	C	0 9 0	E	K E	- - - -
Series	Capacitance	Tolerance	Voltage	ØD (mm)	Height (mm)	Type code	Lead treatment	Special requirement

Radial type • **KF** version • kinked anode and cathode • wide lead spacing 5mm

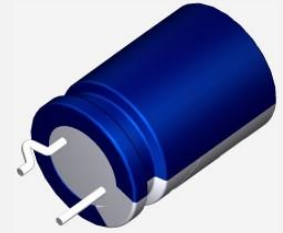
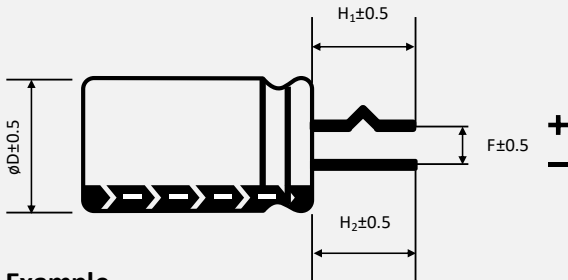
Ø D (mm)	5	6.3	8
F (mm)	5	5	5
H ₁ (mm)	4	4	4
E (mm)	1.12	1.12	1.32

Example

T H	2 2 1	M	0 2 5	F	1 1 5	E	K F	- - - -
Series	Capacitance	Tolerance	Voltage	ØD (mm)	Height (mm)	Type code	Lead treatment	Special requirement

AVAILABLE LEAD TREATMENTS • RADIAL ALUMINUM ELECTROLYTIC CAPACITORS

Radial type • CK version • kinked anode

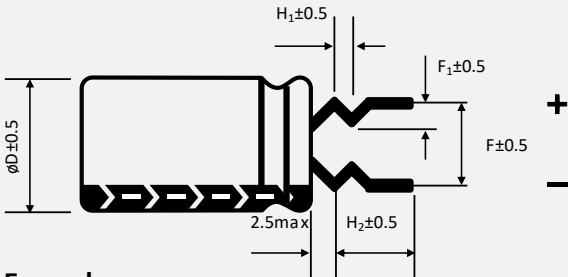


$\varnothing D$ (mm)	4	5	6.3	8	10	13	16	18
F (mm)	1.5	2	2.5	3.5	5	5	7.5	7.5
H_1 (mm)	4	4	4	4	4.5	4.5	4.5	4.5
H_2 (mm)	4	4	4	4	4.5	4.5	4.5	4.5

Example

G S	4 7 1	M	0 2 5	F	1 1 5	E	C K	- - - -
Series	Capacitance	Tolerance	Voltage	$\varnothing D$ (mm)	Height (mm)	Type code	Lead treatment	Special requirement

Radial type • EF version • double kinked anode and cathode • lead spacing 5mm

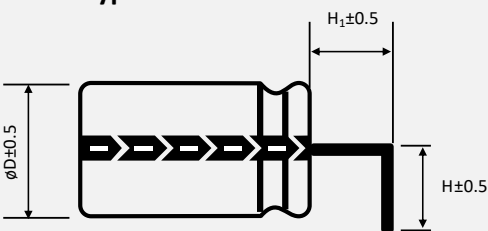


$\varnothing D$ (mm)	4	5	6.3	8
F (mm)	5	5	5	5
H_1 (mm)	1.8	1.8	1.8	1.8
H_2 (mm)	4	4	4	4
F_1 (mm)	1.2	1.2	1.2	1.2

Example

K W	1 0 0	M	0 6 3	C	0 9 0	E	E F	- - - -
Series	Capacitance	Tolerance	Voltage	$\varnothing D$ (mm)	Height (mm)	Type code	Lead treatment	Special requirement

Radial type • CR version • L-bended leads • cathode right



Length „H“ customized. See product code table customized lead length for further reference.

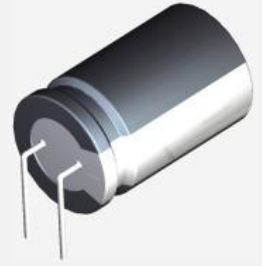
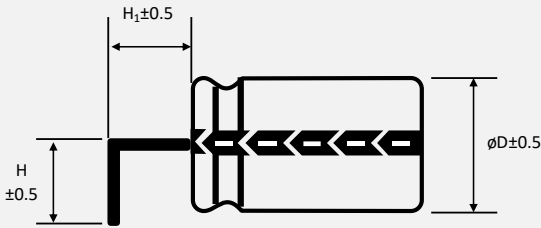
$\varnothing D$ (mm)	4	5	6.3	8	10	13	16	18	22	25
F (mm)	1.5	2	2.5	3.5	5	5	7.5	7.5	10	12.5
H_1 (mm)	2.5	2.5	2.5	2.5	2.5	2.5	2.5	2.5	2.5	2.5

Example

F K	1 0 1	M	4 5 0	K	3 5 5	E	C R	- - - -
Series	Capacitance	Tolerance	Voltage	$\varnothing D$ (mm)	Height (mm)	Type code	Lead treatment	Special requirement

AVAILABLE LEAD TREATMENTS • RADIAL ALUMINUM ELECTROLYTIC CAPACITORS

Radial type - **CL** version - L - bended leads - cathode left



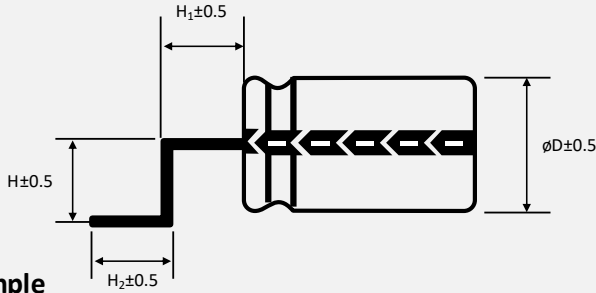
Ø D (mm)	4	5	6.3	8	10	13	16	18	22	25
F (mm)	1.5	2	2.5	3.5	5	5	7.5	7.5	10	12.5
H ₁ (mm)	2.5	2.5	2.5	2.5	2.5	2.5	2.5	2.5	2.5	2.5

Example

Length „H“ customized. See product code table customized lead length for further reference.

K S	2 2 0	M	4 0 0	I	2 0 0	E	C L	-	-	-	-
Series	Capacitance	Tolerance	Voltage	ØD (mm)	Height (mm)	Type code	Lead treatment	Special requirement			

Radial type - **CS** version - SMD - bended leads - cathode left



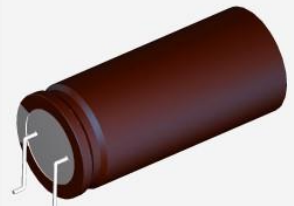
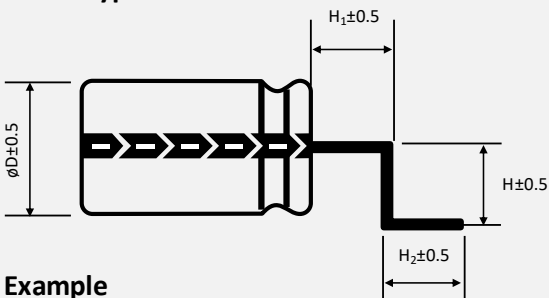
Length „H“, „H₁“ and H₂“ customized. Ask CapXon for further assistance

Ø D (mm)	4	5	6.3	8	10	13	16	18	22	25
F (mm)	1.5	2	2.5	3.5	5	5	7.5	7.5	10	12.5

Example

F K	3 R 3	M	4 5 0	G	0 9 0	E	C S	-	-	-	-
Series	Capacitance	Tolerance	Voltage	ØD (mm)	Height (mm)	Type code	Lead treatment	Special requirement			

Radial type - **CZ** version - SMD - bended leads - cathode right



Length „H“, „H₁“ and H₂“ customized. Ask CapXon for further assistance

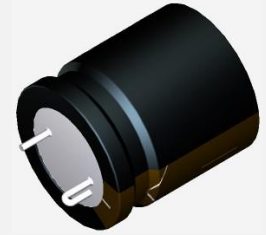
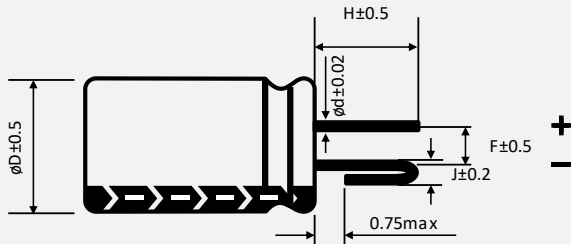
Ø D (mm)	4	5	6.3	8	10	13	16	18	22	25
F (mm)	1.5	2	2.5	3.5	5	5	7.5	7.5	10	12.5

Example

R W	4 7 2	M	0 6 3	M	5 0 0	E	C Z	-	-	-	-
Series	Capacitance	Tolerance	Voltage	ØD (mm)	Height (mm)	Type code	Lead treatment	Special requirement			

AVAILABLE LEAD TREATMENTS • RADIAL ALUMINUM ELECTROLYTIC CAPACITORS

Radial type • **J I** version • polarity protected footprint • cathode bended



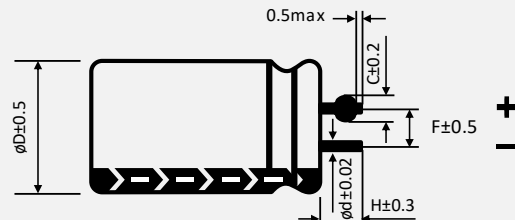
Length „H“ customized. See product code table **customized lead length** for further reference.

$\varnothing D$ (mm)	10	12.5	13	16	18	22
F (mm)	5	5	5	7.5	7.5	10
J (mm)	1.5	1.5	1.5	1.9	1.9	1.9
$\varnothing d$ (mm)	0.6	0.6	0.6	0.8	0.8	0.8

Example

F L	4 7 0	M	4 0 0	K	2 0 0	E	J I	- - - -
Series	Capacitance	Tolerance	Voltage	$\varnothing D$ (mm)	Height (mm)	Type code	Lead treatment	Special requirement

Radial type • **CD** version • polarity protected footprint • anode pressed

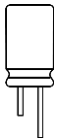


Length „H“ customized. See product code table **customized lead length** for further reference.

$\varnothing D$ (mm)	10	12.5	13	16	18	22
F (mm)	5	5	5	7.5	7.5	10
C (mm)	1.1	1.1	1.1	1.4	1.4	1.4
$\varnothing d$ (mm)	0.6	0.6	0.6	0.8	0.8	0.8

Example

G L	2 2 1	M	0 5 0	G	1 6 0	E	C D	- - - -
Series	Capacitance	Tolerance	Voltage	$\varnothing D$ (mm)	Height (mm)	Type code	Lead treatment	Special requirement

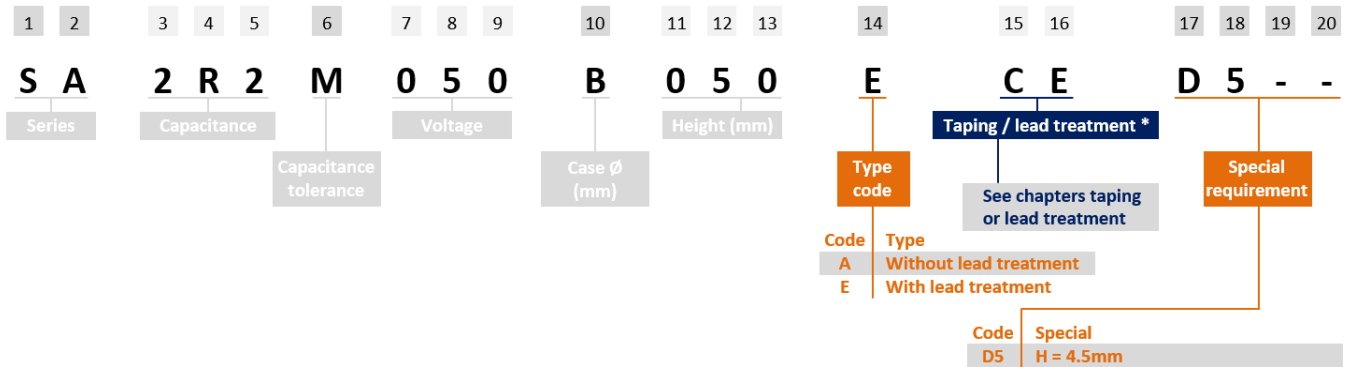


PRODUCT CODE TABLE • CUSTOMIZED LEAD LENGTH

THT type example:

SA series ▪ 2.2µF ▪ 50V ▪ ±20% ▪ Ø 4mm ▪ L 5mm ▪ CE version, wide lead spacing ▪ P 2.5mm ▪ H 4.5mm

▪ Non-Automotive



Product code 17 th digit	H (mm)
A	1
B	2
C	3
D	4
E	5
F	6
G	7
H	8
I	9
J	10
K	11
L	12
M	13
N	14
O	15
P	16
Q	17
R	18
S	19
T	20
U	21
V	22
W	23
X	24
Y	25
Z	26

Product code 18 th digit	H (mm)
0	0.0
1	0.1
2	0.2
3	0.3
4	0.4
5	0.5
6	0.6
7	0.7
8	0.8
9	0.9

Example H (mm)	Product code Non-Automotive
4.5	D5
6.0	F0
10.7	J7
16.5	P5

Example H (mm)	Product code Automotive
4.5	XD5
6.0	XF0
10.7	XX7
16.5	XP5

The 17th digit is according basic ordering of the Latin alphabet and shows the measure "H" in front of the decimal separator. The 18th digit follows the numbering from 0 to 9 and shows the measure "H" after the decimal separator.

Remark for Automotive version: In the case of an AEC-Q200 qualified component, the measure "H" in front of the decimal separator moves to the 18th digit and the measure "H" after the decimal separator to the 19th digit.